

2014 – 2015 INGHAM ACTION AGENDA SUMMARY



Ingham Great Start Collaborative
 inghamgreatstart.org

Every child ready to succeed in school and in life.

MICHIGAN'S EARLY CHILDHOOD OUTCOMES:

CHILDREN ARE...

- Born healthy
- Healthy, thriving, and developmentally on track
- Ready for school at time of school entry
- Reading proficiently by end of 3rd grade

Quality - Increase awareness, understanding and implementation of quality standards in early childhood.

Gaps - Decrease gaps in services for families with children birth to eight years old.

Voice - Increase opportunity for those who access services to have their voice heard and authentically used.

Connection - Increase and improve connection, communication, and coordination between health and education systems.

Promote understanding of roles and responsibilities for providers and parents.

Increase access to existing early childhood programs that meet families' needs.

Within individual programs or agencies, increase opportunities to hear and use family voice to guide decision-making.

Strengthen awareness of community resources and information exchange among providers and families.

- Understand high quality in early childhood settings
- Develop and increase awareness of school readiness definition
- Organize core trainings on diverse early childhood topics
- Survey professionals and families about their role in early childhood
- Advocate for consistent funding

- Promote preschool recruitment through inghampreschool.org
- Grow the Early Childhood Endowment Fund
- Advocate for funding to increase capacity of programs
- Address cultural and racial barriers

- Assess and define family engagement
- Provide customer service training
- Provide support and advocate for their children
- Use families' stories to illuminate experiences with social inequities

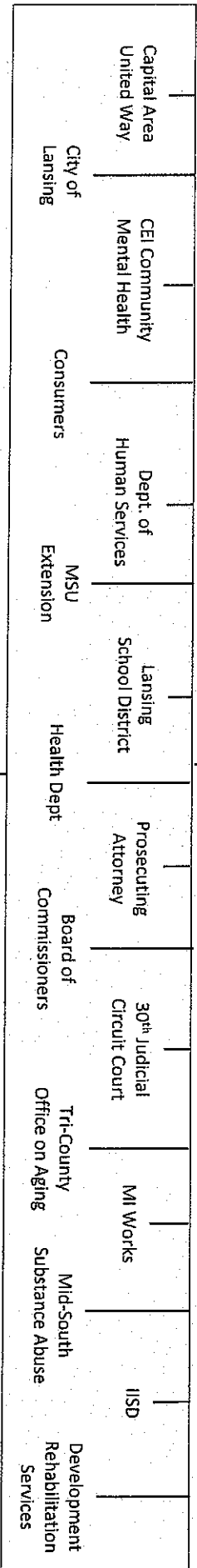
- Evaluate and strengthen 211
- Promote opportunities for health and education to network
- Target community resource outreach

TARGET

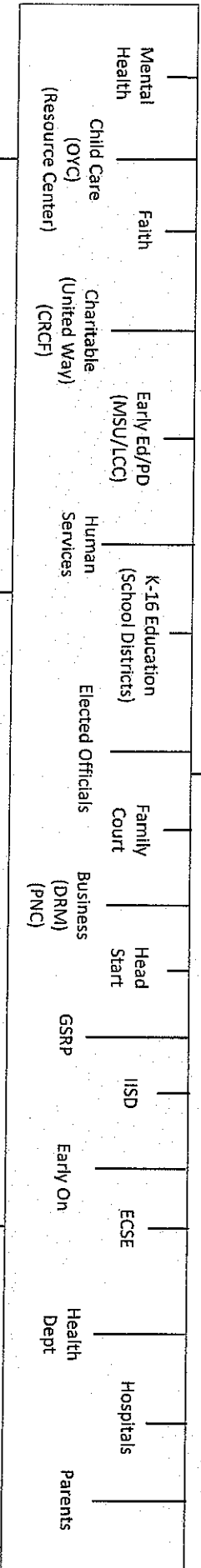
OBJECTIVE

ACTIVITIES

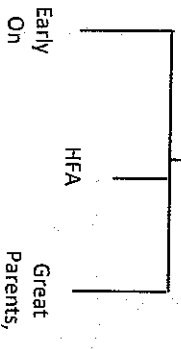
Ingham County Power of We (Community Collaborative)



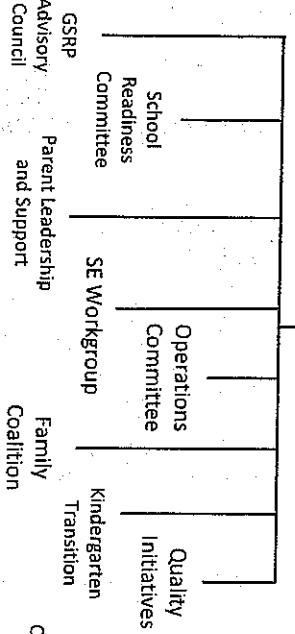
Great Start Collaborative



GSC Advisory Groups



GSC Workgroups



Additional Collaboratives

